

Tapped Inductor with Switch

■ Description

- ▶ Converter topology where the switch is coupled in the tap of a tapped inductor

■ Benefits

- ▶ Allows feedback sensing relative to the switch and reduces the need for level shifting circuits
- ▶ **Could be used with:** tapped buck converter, Inverse Watkins-Johnson converter, lighting devices

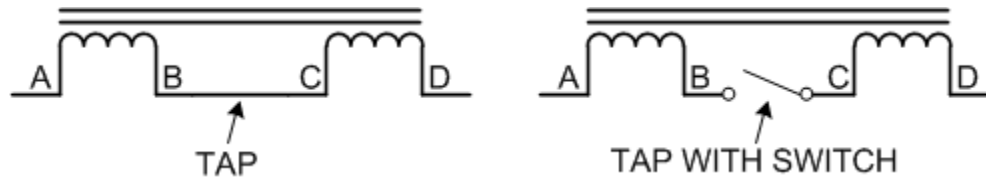


Figure 1. Tapped inductor and a tapped inductor with switch

Tapped Inductor with Switch

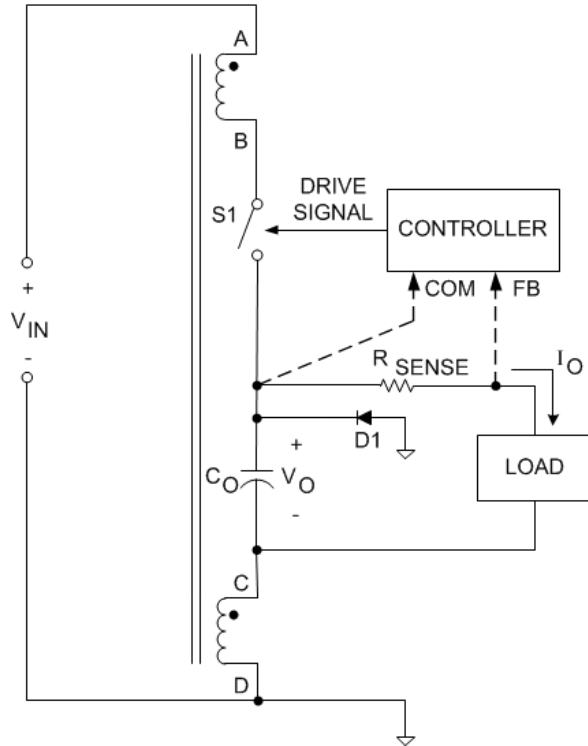


Figure 2. Buck converter utilizing a tapped inductor with switch

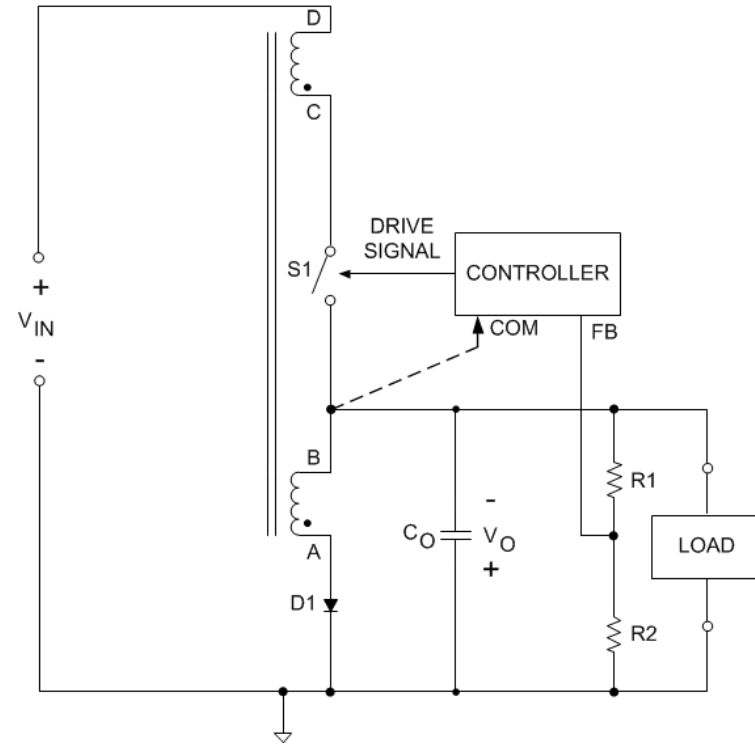


Figure 3. Inverse Watkins-Johnson converter utilizing a tapped inductor with switch